

1. Violin

85 Årstiderne

1. Forårsvals

Hans Engel 2016

♩. = 60
mf

The first staff of music for '1. Forårsvals' is in treble clef, 3/4 time, and D major. It begins with a repeat sign and a first ending bracket. The melody consists of quarter and eighth notes.

8
1. 2.
mf

The second staff starts at measure 8. It features a first ending bracket with two endings. The second ending leads to a key change to E major. The dynamics are marked *mf*.

13
1. 2.

The third staff starts at measure 13. It continues the melody with a first ending bracket and two endings. The dynamics are *mf*.

19
1. 2.

The fourth staff starts at measure 19. It concludes the piece with a first ending bracket and two endings, ending with a double bar line and a key signature change to E major.

2. Sommertur

Hans Engel 2016

♩. = 108 Gangtrin
f

The first staff of '2. Sommertur' is in treble clef, 6/8 time, and D major. It begins with a repeat sign and a first ending bracket. The melody is characterized by eighth notes and slurs. The dynamics are marked *f*.

6
1. 2.

The second staff starts at measure 6. It features a first ending bracket with two endings. The dynamics are *f*.

10
♩. = 96 Totrin
mp

The third staff starts at measure 10. It is in 3/4 time and D major. The melody consists of quarter notes. The dynamics are marked *mp*.

15
1. 2.

The fourth staff starts at measure 15. It features a first ending bracket with two endings. The dynamics are *mp*.

19
Løbetrin
♩. = 144
mf

The fifth staff starts at measure 19. It is in 3/4 time and D major. The melody consists of quarter notes. The dynamics are marked *mf*.

23

The sixth staff starts at measure 23. It concludes the piece with a final cadence. The dynamics are *mf*.

85 Årstiderne

1. Violin

3. Høstdans

Trad. folkemelodi-Salling

27 $\text{♩} = 80$ Violinsolo Hopsatrin

35 Hoptrin

43 $\text{♩} = 80$ Tutti Efterårsfantasi / Hans Engel 2016

51 $\text{♩} = 80$

59 $\text{♩} = 80$ **D.S. /To Coda**
ff Storm og torden!

67 **Coda** Stormen aftager **rit.**

mf

75 $\text{♩} = 96$ Polonæsetrin march 4. Jul på næsen Hans Engel 2016

81 $\text{♩} = 96$

87 $\text{♩} = 96$

92 $\text{♩} = 120$ Polonæsetrin rundt

96 $\text{♩} = 120$

100 $\text{♩} = 120$

104 $\text{♩} = 120$

85 Årstiderne

2. Violin

1. Forårsvals

Hans Engel 2016

$\text{♩} = 60$

mf

5

9

mf

16

21

1. 2.

2. Sommertur

Hans Engel 2016

$\text{♩} = 108$ Gangtrin

mf

6

1. 2.

10

$\text{♩} = 96$ Totrin

p

17

1. 2.

$\text{♩} = 144$ Løbetrin

mf

22

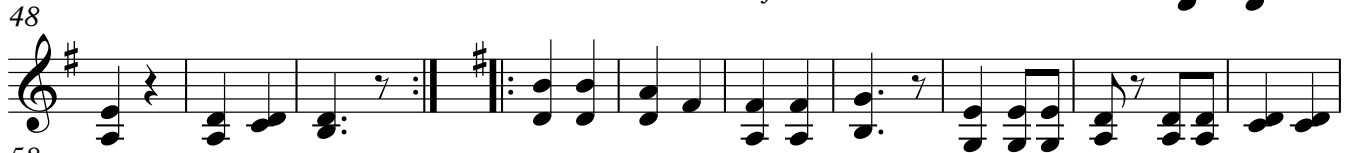
85 Årstiderne

2. Violin

3. Høstdans

27 ♩ = 80 Violinsolo (TradFolkemelodj-Salling)  Tutti Efterårsfantasi / Hans Engel 2016

27  *mf*

48 

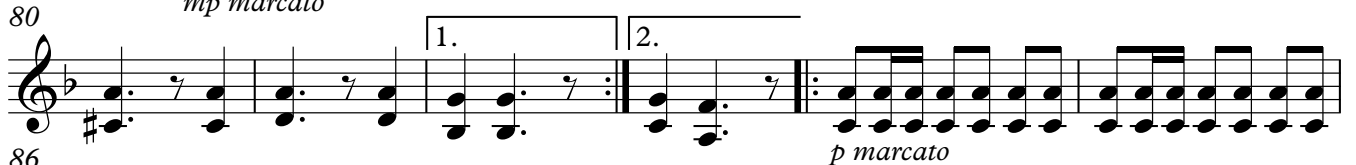
58  *f* Storm og torden **D.S./To Coda**

67 **Coda rit.**  *mf* Stormen aftager

4. Jul på næsen

75 ♩ = 96 Polonæsetrin march Hans Engel 2016

75  *mp marcato*

80  1. 2. *p marcato*

86 

91 ♩ = 120 Polonæsetrin rundt  *mp*

96  *mf*

100  *mf*

104  1.2. 3. *mf*

85 Årstiderne

Harmonika

1. Forårsvals

Hans Engel 2016

$\text{♩} = 60$ G

p

D D⁷ Em C

7 D⁷ 1. G 2. G 1. 8 2. D

19 F C C⁷ Dm

24 B^b C⁷ 1. F 2. F

2. Sommertur

Hans Engel 2016

$\text{♩} = 108$ Gangtrin

mp

D A D A⁷ G A

6 A 1. D A 2. D

10 $\text{♩} = 96$ Totrin

mp

A E E⁷ A A D

16 E⁷ 1. A 2. A Løbetrin 8

Harmonika

85 Årstiderne

3. Høstdans

♩ = 80 (trad. Folkemelodi - Salling)
 27 **Violinsolo** Hopsatrin 8 Hoptrin 8 Hans Engel 2016

43 *mf* G D G C D D⁷ G

59 *f* G D⁷ G^m D C^m D⁷ G D E^m C D⁷ **D.S./To Coda**

67 **Coda** 8 (Stormen aftager)

4. Jul på næsen

♩ = 96 Polonæsetrin march Hans Engel 2016

75 *mf* G^m D⁷ E^b C^m A D⁷

82 1. G^m 2. C⁷ F *mf* F F F

87 F F F F C⁷ F

92 *mp* G^m F G^m C⁷ F G^m F

98 G^m C⁷ F D A D *p*

103 E^m⁷ D D A

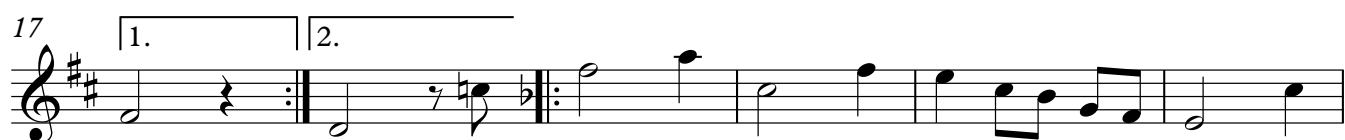
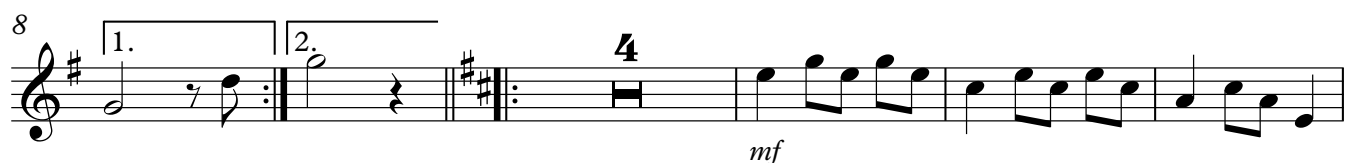
106 1.2. A D 3. A D

85 Årstiderne

Fløjte

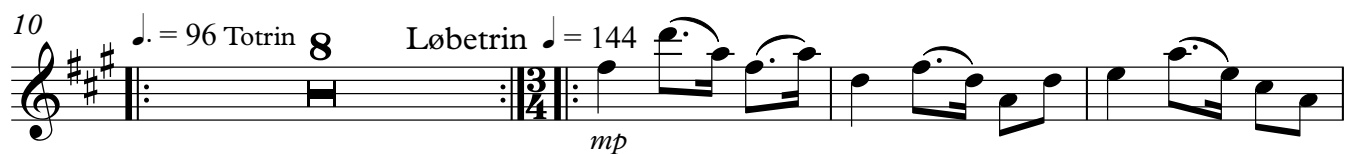
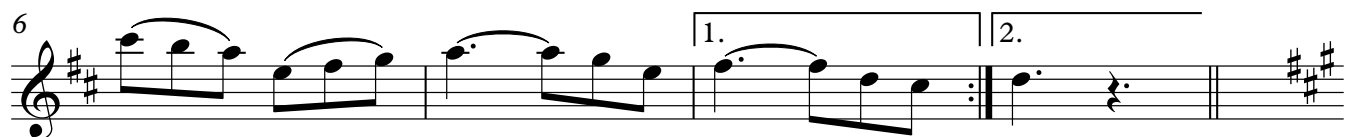
1. Forårsvals

Hans Engel 2016



2. Sommertur

Hans Engel 2016



Fløjte

85 Årstiderne
3. Høstdans

Fløjten har ingen egenstemme i høstdansen, men kan ad libitum spille 1.-violinstemmen vist her:

26 ♩ = 80 Violinsolo (Trad. Folkemelodi-Salling) Tutti Hans Engel 2016

44

50

58 *mf*

62 *ff* Storm og torden!

f D.S./To Coda

66 **Coda** Stormen aftager *rit.*

mf

4. Jul på næsen

Hans Engel 2016

74 ♩ = 96 Polonæse march

83

87 *f*

91 ♩ = 120 Polonæsetrin rundt

97 *mp*

102 *mf*

1. 2.

1.2. 3.

85 Årstiderne

A-Klarinet

1. Forårsvals

Hans Engel 2016

$\text{♩} = 60$

mp

9 *mf*

mp

2. Sommertur

Hans Engel 2016

$\text{♩} = 108$ Gangtrin

mf

$\text{♩} = 96$ Totrin

mp

$\text{♩} = 144$ Løbetrin

mp

A-Klarinet

85 Årstiderne

3. Høstdans

$\text{♩} = 80$ Violin solo (Trad. Folkemelodi-Salling)

Hoptrin 8 Hopsatrin 8

Tutti
Hopsatrin Efterårsfantasi / Hans Engel 2016

mf

Hoptrin

D.S./To Coda

f (Siorm og Torden)

Coda rit.

(Stormen aftager)

4. Jul på næsen

$\text{♩} = 96$ Polonæsetrin march Hans Engel 2016

4

1. 2.

f

$\text{♩} = 120$ Polonæsetrin rundt

8

mf

1.2. 3.

Contrabas

85 Årstiderne

1. Forårsvals

Hans Engel 2016

$\text{♩} = 60$

mf

1. 2.

mf

1. 2.

1. 2.

2. Sommertur

Hans Engel 2016

$\text{♩} = 108$ arco. Gangtrin

mf

1. 2.

p

$\text{♩} = 96$ Totrin

1. 2.

$\text{♩} = 144$ pizz. Løbetrin

mp

85 Årstiderne

Contrabas

3. Høstdans

♩ = 80 1. Violinsolo (Trad.folkemelodi-Salling)



Tutti Efterårsfantasi / Hans Engel 2016

8 8

mf

D.S./To Coda

ff Storm og torden! *mf*

Coda rit.

mf Stormen aftager

4. Jul på næsen

♩ = 96 Polonæsetrin march

Hans Engel 2016

mf

1. 2.

mf *mf*

♩ = 120 Polonæsetrin rundt

mf

mf

1.2. 3.