

# 70. Efterårsvals

## Violin 1

Hans Engel 2012

$\text{♩} = 60$   $\text{♩}$

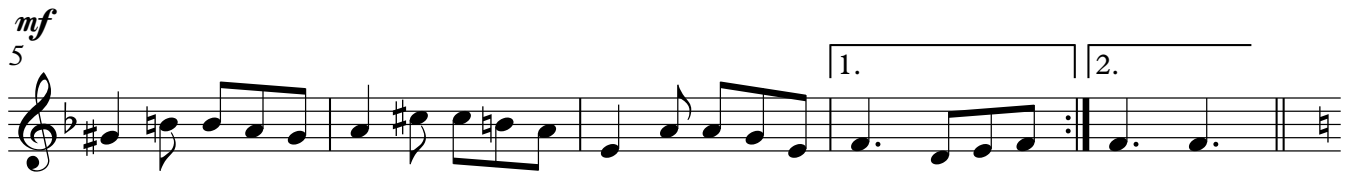
*f* *ff* *mf* *ff* *ff*

**D.S. al Fine**

## 70. Efterårsvals

## Violin 2

Hans Engel 2012



D.S. al Fine

# 70. Efterårsvals

3

Fløjte

Hans Engel 2012

♩. = 60  $\text{S}$

4

1.

9

2.

*mf*

2

15

*f*

8

26

*mf*

31

1.

2.

D.S. al Fine

Detailed description: This is the musical score for the Fløjte (Flute) part of the piece '70. Efterårsvals'. It consists of five staves of music. The first staff starts with a treble clef, a key signature of one flat (B-flat), and a 6/8 time signature. The tempo is marked as quarter note = 60. The music begins with a repeat sign and a first ending bracket. The second staff continues the melody with a second ending bracket. The third staff features a dynamic marking of *f* and an 8-measure rest. The fourth staff has a dynamic marking of *mf*. The fifth staff concludes with two endings and the instruction 'D.S. al Fine'.

A-Klarinet

♩. = 60  $\text{S}$

*mf*

5

1.

2.

10

*f*

17

*mp*

21

26

*f*

31

1.

2.

D.S. al Fine

Detailed description: This is the musical score for the A-Klarinet (Alto Clarinet) part of the piece '70. Efterårsvals'. It consists of six staves of music. The first staff starts with a treble clef, a key signature of two flats (B-flat and E-flat), and a 6/8 time signature. The tempo is marked as quarter note = 60. The music begins with a repeat sign and a first ending bracket. The second staff continues the melody with a second ending bracket. The third staff features a dynamic marking of *f*. The fourth staff has a dynamic marking of *mp*. The fifth staff has a dynamic marking of *f*. The sixth staff concludes with two endings and the instruction 'D.S. al Fine'.

## 70. Efterårsvals

Harmonika ☺

Hans Engel 2012

♩. = 60  $\text{♩}$

2 *p* Gm E A A<sup>7</sup>

8 1. Dm 2. Dm E<sup>7</sup> Am F *mf*

13 E F Dm E<sup>7</sup> Am

18 4 *p* B $\flat$  Gm E A<sup>7</sup> D

26 D G Em A Hm *mf*

31 G Em 1. A<sup>7</sup> D 2. A<sup>7</sup> D

D.S. al Fine

Bas  $\text{♩}$ . = 60

5 *mf* 1. 2.

10

17 *f*

22 *mp*

26

31 *mf* 1. 2.