

4. Engel'sk Dans

Hans Engel 1989

Violin 1

♩ = 56



Violin 1 score in D major, 3/8 time. The piece consists of five staves of music. The first staff begins with a treble clef, a key signature of two sharps (D major), and a 3/8 time signature. The tempo is marked as quarter note = 56. The first staff contains a melodic line starting with a half note D, followed by quarter notes A and D, and then eighth notes. Chords D, A, D, and A7 are indicated above the staff. The first ending is marked '1. D'. The second staff starts with a second ending '2. D' and a piano dynamic 'p'. It features a 'KL.solo' section with chords D, A, D, and A7. The third staff begins with a forte dynamic 'f' and continues with eighth-note patterns and chords D, A, and D. The fourth staff has a 'Soli - strygere' instruction and a dynamic of 'f dolce espress.'. The fifth staff is marked 'Tutti' and 'f', continuing the melodic line with chords D, A, D, A7, and D.

Violin 2

♩ = 56



Violin 2 score in D major, 3/8 time. The piece consists of five staves of music. The first staff begins with a treble clef, a key signature of two sharps (D major), and a 3/8 time signature. The tempo is marked as quarter note = 56. The first staff contains a melodic line starting with a half note D, followed by quarter notes A and D, and then eighth notes. The first ending is marked '1.' and the second ending '2.'. The dynamic is 'mf'. The second staff starts with a piano dynamic 'p' and a 'Kl solo' instruction. It features eighth-note patterns and chords D, A, D, and A7. The third staff begins with a 'Tutti' instruction and a dynamic of 'mf'. It continues with eighth-note patterns and chords D, A, D, and A7. The fourth staff has a 'Soli - strygere' instruction and a dynamic of 'mf dolce espress.'. The fifth staff is marked 'Tutti' and 'mf', continuing the melodic line with chords D, A, D, A7, and D.

4. Engel'sk Dans

Hans Engel 1989

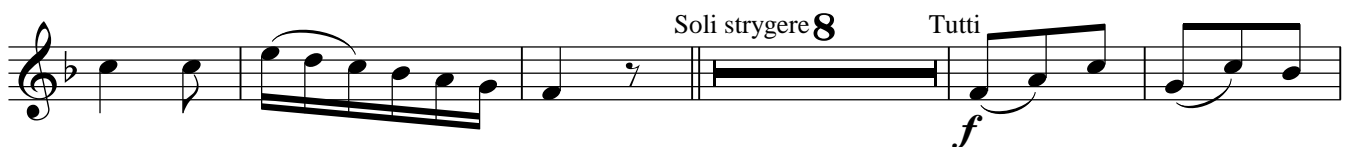
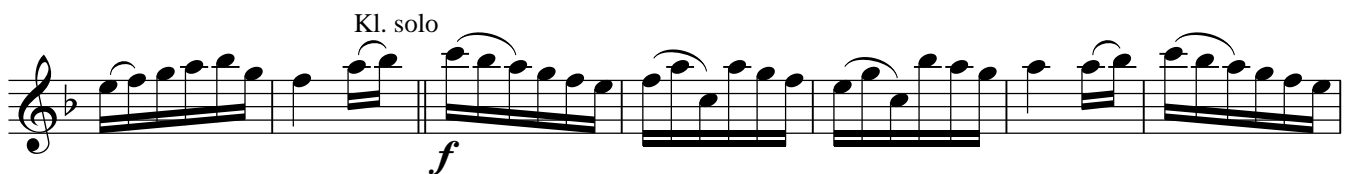
Fløjte

♩. = 56



A-klarinet

♩. = 56



4. Engel'sk Dans

Hans Engel 1989

Bas

$\text{♩} = 56$

mp

p

Soli strygere

mp dolce espress.

Tutti

mf

Dansebeskrivelse (dansen er god som såkaldt "Herregårdsdans")

Opstilling: 2 par overfor hinanden (alle par i to rækker). Valsetrin.

1. tur a) *Parvis vals på stedet, alm. fatning, ret om 8 trin og avet om 8 trin. Danses med meget små valsetrin, (såkaldte "sidevalsetrin") - ialt 1 omgang rundt med de 8 trin.*
- b) *Damerne bytter plads højre forbi hinanden med 4 valsetrin (begynd med højre). Under sidste trin drejes højre omkring. Herrerne bytter plads på samme måde, dog med venstre forbi hinanden med 4 valsetrin (begynd med venstre). Under sidste trin drejes højre omkring.*

Derefter kæde med 8 valsetrin.

- c) *Parvis vals rundt i salen. De to par holder sammen!*

Ture i a): vælges ad libitum - f.eks.: Enhånds mølle med og mod solen - Dobbelt kreds med og mod solen - Kreds med livfatning med og mod solen, - alle med alm. valsetrin.

Dansen slutter med parvis vals ud i salen.