

56. Gammelvalsen

1. Violin

Hans Engel 2010

$\text{♩} = 56$

Am Dm E F Dm E⁷

8 Am *mf* Dm E F Dm

15 E⁷ Am A D E

21 F Dm E⁷ *mp* Am A

27 D E F Dm E⁷ Am

33 A D E F^{#m} *f*

38 D E⁷ A D

44 E F^{#m} D E⁷ 1. A 2. A

A D E F^{#m} D *f*

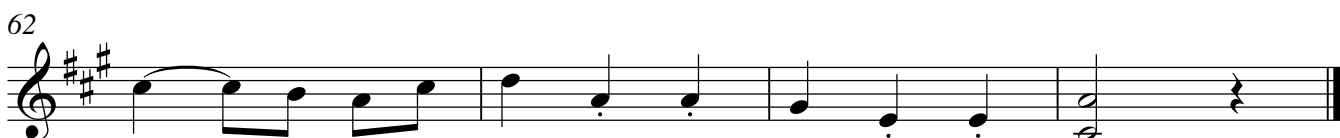
56 E⁷ A D

61 E F^{#m} D E⁷ A

56. Gammelvalsen

Hans Engel 2010

2. Violin

 $\text{♩} = 56$ 

56. Gammelvalsen

3

Harmonika

Hans Engel 2010

♩. = 56

4

F Dm E7 Am F

mp

14 Dm E7 Am A D E

mf

21 F Dm E7 Am A

mf

27 D E F Dm E7 Am

mf

33

3

F#m D E7 A

mp

42 A D E F#m D E7 A

mf

49 A D E F#m D

mf

55 E7 A D

mf

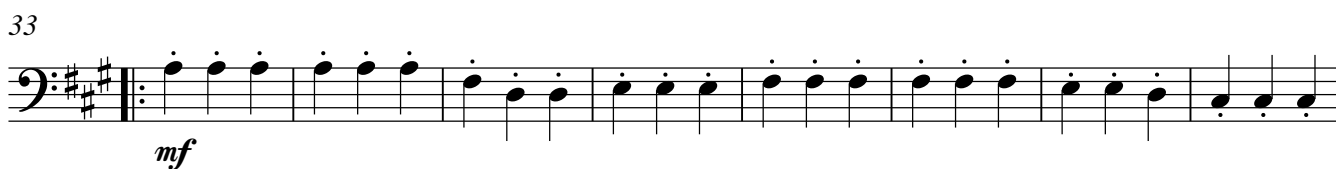
60 E F#m D E7 A

mf

56. Gammelvalsen

Bas

Hans Engel 2010

 $\text{♩} = 56$ 

56. Gammelvalsen

5

A-Klarinet

Hans Engel 2010

♩ = 56

3

mf

9

3

17

mf

3

24

29

4

3

mp

41

49

mf

55

60

56. Gammelvalsen

Fløjte

Hans Engel 2010

♩ = 56

3

mp

8

3

17

mp

21

3

29

4 **3**

p

41

mf

56

61

Copyright © 2010 Hans Engel