

29. Molina's Kæreste

Hans Engel 1992/05

Violin 1 $\text{♩} = 76$

Violin 1 score for the first section of 'Molina's Kæreste'. The music is in 2/4 time with a tempo of 76. The key signature has one flat (B-flat). The score consists of five staves. The first staff begins with a **Dm** chord and the tempo marking $\text{♩} = 76$. The first two staves are marked 'Løbe-/Hurretrin' and the third 'Gm'. The first ending (1.) is marked 'Dm' and the second ending (2.) is marked 'A7 Dm'. The third staff has a '3' below it. The fourth and fifth staves are marked 'Dm Chassétrin' and 'A'. The sixth staff has a '3' below it. The seventh staff has a '1. Dm' and '2. Dm D' above it. The eighth staff is marked 'D Valsetrin A' and the ninth 'D'. The tenth staff is marked 'A D A A'. The eleventh staff is marked 'D G A7 D' and ends with 'Fine'.

Violin 2

Violin 2 score for the first section of 'Molina's Kæreste'. The music is in 2/4 time with a tempo of 76. The key signature has one flat (B-flat). The score consists of five staves. The first staff begins with a $\text{♩} = 76$ tempo marking and the tempo marking 'Løbe-/Hurretrin'. The first ending (1.) is marked '1.' and the second ending (2.) is marked '2. Chassétrin'. The second staff has a '1.' above it. The third staff has a '2.' above it and a tempo marking $\text{♩} = 56$. The fourth staff has a '1.' above it. The fifth staff ends with 'Fine'.

29. Molina's Kæreste

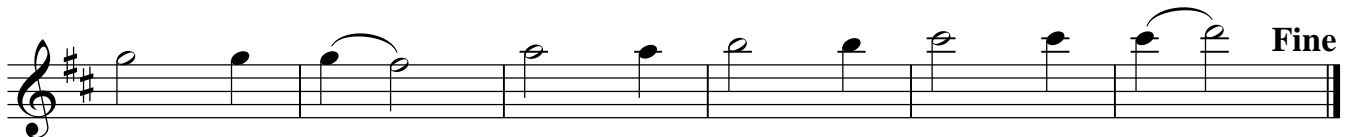
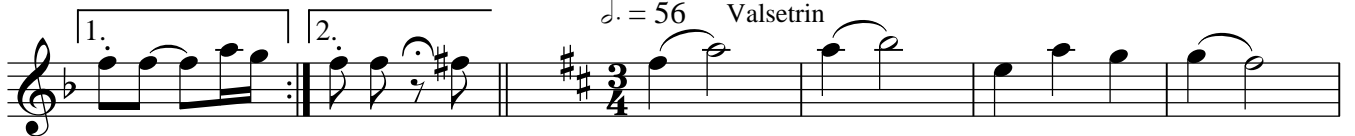
Hans Engel 1992

Fløjte $\text{♩} = 76$

Løbe-/Hurretrin



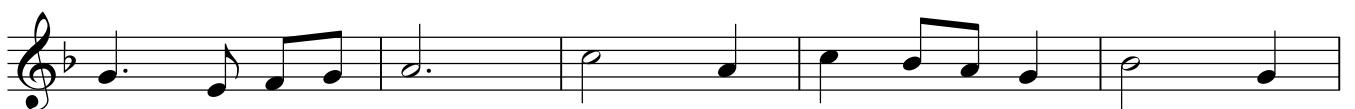
Chassétrin

 $\text{♩} = 56$ Valsetrin

A-klarinet

 $\text{♩} = 76$ Løbe-/Hurretrin

Chassétrin

 $\text{♩} = 56$ Valsetrin

Harmonika

29. Molina's Kæreste

Hans Engel 1992/07

♩ = 76

Dm Løbe-/Hurretrin Gm A

1. Dm 2. A⁷ Dm

Dm Chassétrin A Dm Gm A⁷

1. Dm 2. Dm D

♩ = 56

D Valsetrin A D

D G A D A

A D G A⁷ D Fine

DANSEBESKRIVELSE:

Opstilling 4 par i kvadrille.

1. tur a) Kreds, 16 løbetrin med og 16 løbetrin mod solen.
 - b) 1. og 2. par halvkæde til modsat plads, 4 chassétrin - derefter halvkæde hjem med 4 chassétrin. 3. og 4. par det samme.
 - c) Parvis vals i kreds, alm. fatning.
 2. - 6. tur er alle med 16 hurretrin med solen i afd. a (b og c er ens i alle ture):
 2. tur a) Ryggreb, omdansning.
 3. tur a) Tohånds damemølle.
 4. tur a) Tohånds herremølle.
 5. tur a) Damekreds, livfatning.
 6. tur a) Herrekreds, livfatning.
- Dansen slutter med 6. tur, afd. c), parvis vals ud i salen.

Bas ♩ = 76

Løbe-/Hurretrin

1. 2. Chassétrin

1.

♩ = 56

2. Valsetrin

Fine